

AP MORGAN



Penfields Road, Stourbridge, West
Asking Price £250,000

Features:

- Semi Detached
- 3 Bedrooms
- Ample Storage
- Extended
- Off Street Parking
- Split level Garden
- Nearby Transport Links
- Popular And Convenient Area Close to All Amenities

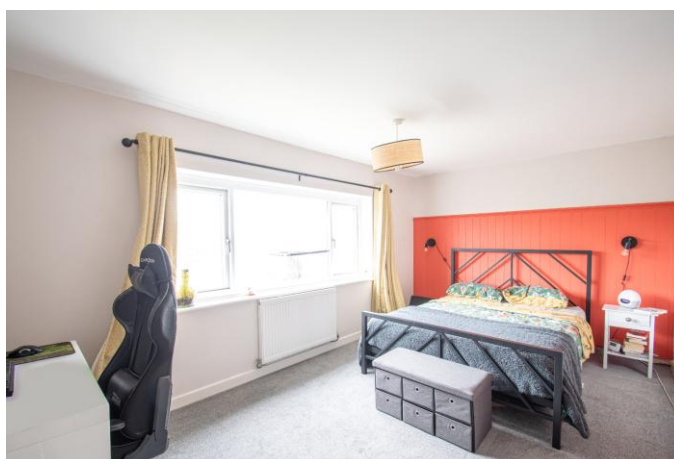
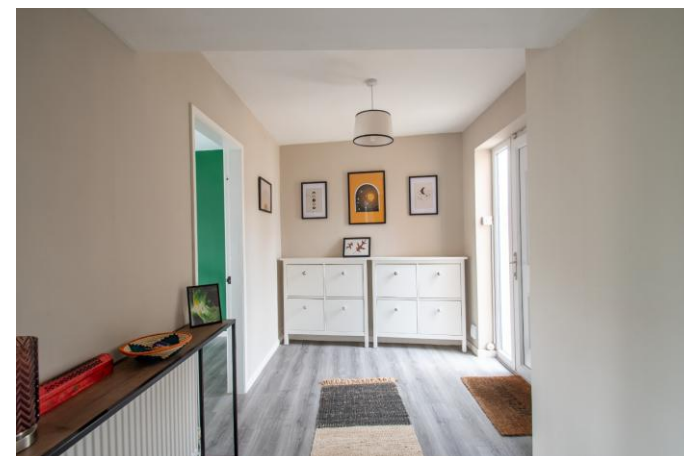
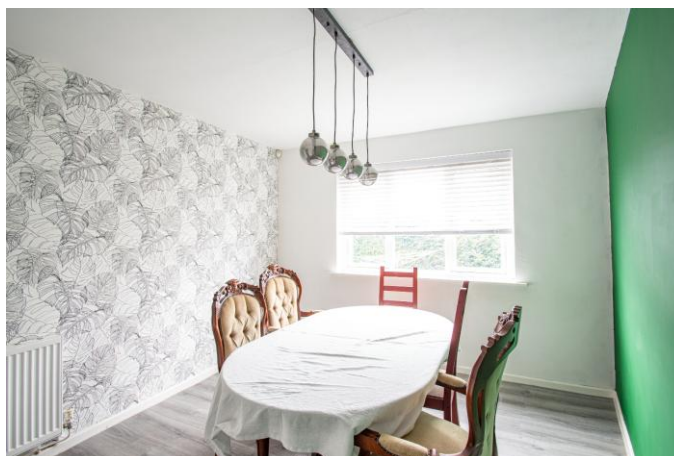
Description:

A well-presented and extended 3-bedroom semi detached home offering spacious and versatile accommodation, ideal for families or those seeking extra living space. Set within the highly desirable area of Stourbridge, this property boasts generous room sizes, a split-level rear garden, off-road parking, and an integral garage, all within easy reach of local amenities, schools, and transport links.

The property sits behind a spacious tarmac and gravel driveway, offering parking for multiple vehicles and access to the garage. A pathway leads to the front entrance, which opens into the main hallway.

The ground floor offers well-proportioned living spaces ideal for families or entertaining. Upon entering, a welcoming hallway provides access to the front facing kitchen, fitted with a range of wall and base units and space for appliances. A door leads through to the internal garage and a useful cupboard beneath the stairs. To the rear, a bright and spacious lounge features French doors opening onto the garden, creating a perfect indoor-outdoor flow. A separate dining room is accessed directly from the hallway, providing a dedicated space for meals or hosting guests.

Upstairs, the landing gives access to three well-sized bedrooms. Bedroom 1, located at the rear, is a generously sized double room. Bedrooms 2 and 3 are front facing, both offering ample space for furnishings. A central bathroom is fitted with a bath and shower over, wash basin, WC, and an additional storage cupboard.



Moving outside, the property enjoys a well-presented split-level garden laid to a large patio with steps down to the lawn, bordered by fencing and mature shrubs for added privacy and ease of maintenance.

Penfield's Road is a popular residential street in Stourbridge, known for its peaceful surroundings and family friendly environment. The area benefits from excellent local schools, nearby parks, and convenient access to shops, supermarkets, and transport links. Stourbridge town centre is just a short distance away, offering a variety of amenities, restaurants, and railway connections to Birmingham and beyond.

Details:

Hallway

Dining Room 3.51 x 3.18 Max

Lounge 3.49 x 4.86

Kitchen 2.70 x 2.29

Garage

Landing

Bedroom 1 3.51 x 4.86 Max

Bedroom 2 2.77 x 2.81

Bedroom 3 2.76 x 1.98

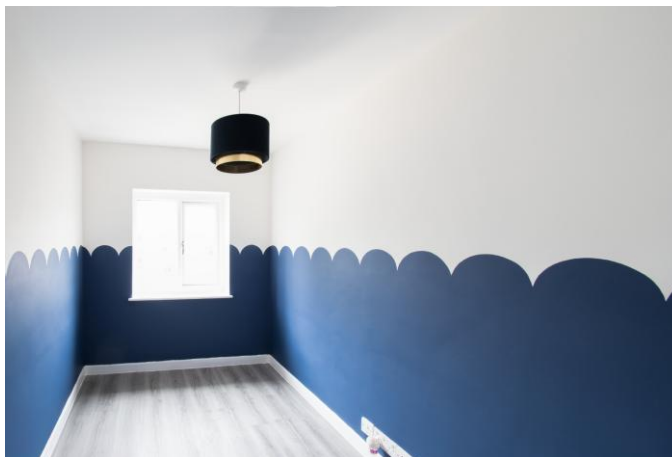
Bathroom 2.40 x 1.75

EPC Rating: C

Council Tax Band: B (tbc by solicitors).

Tenure: Freehold (tbc by solicitors).

For more information or to arrange a viewing, please call us on 01384 319 400.



How can we help you?

Need a mortgage?

We recommend Wiser Mortgage Advice. They will search the market for you to ensure you get the right lender and mortgage deal. They typically achieve mortgage offers much more quickly than if you were dealing with lenders directly. The initial appointment is free and without obligation. Call us on 01384 319 400, or visit their website for more information: www.wisermortgageadvice.co.uk

Property to sell?

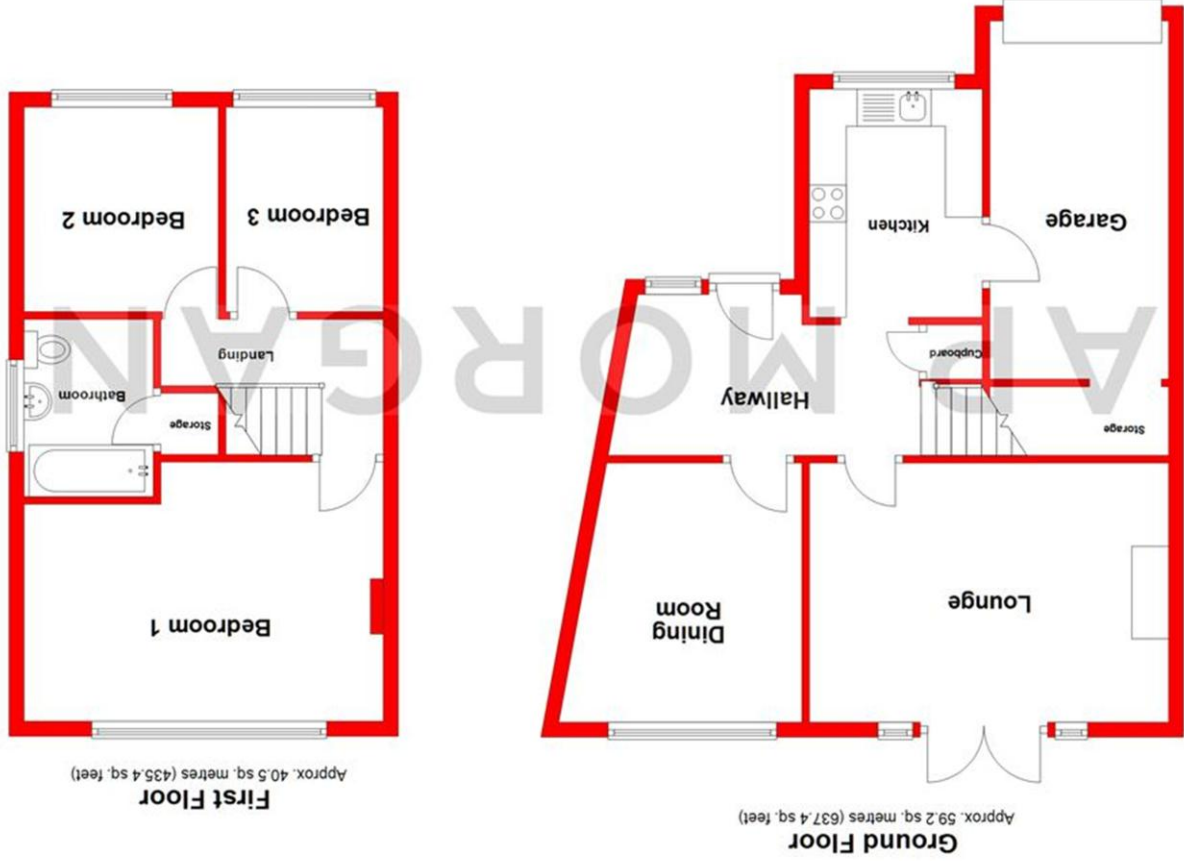
If you need to sell a property in order to buy, you ideally need to be on the market at least (and preferably Sold STC) before viewing, otherwise you may lose out to other buyers when the right property comes along. In these circumstances we can get your property 'live' quickly. Just book a free valuation and we will visit your property and discuss your needs.

Need a solicitor?

A good solicitor can save you literally weeks of time in the buying/selling process, reducing the stress levels of all involved. We will instruct a reputable firm that is competitive on cost and very reliable. Just ask for a quote.

Identity Checks

Estate Agents are required by law to conduct anti-money laundering checks on all those buying a property. We have partnered with a third party supplier to undertake these who will contact you once you have had an offer accepted on a property you wish to buy. The cost of these checks is £39 + VAT per buyer and this is a non-refundable fee. These charges cover the cost of obtaining relevant data, any manual checks and monitoring which might be required. This fee will need to be paid and the checks completed in advance of the issuing of a memorandum of sale on the property you would like to buy.



Whilst every attempt has been made to ensure the accuracy of the floorplan contained here, measurements of doors, windows, rooms, and any other items are approximate and no responsibility is taken for any error, omission or mis-statement. This plan is for illustrative purposes only and should be used as such by any prospective purchaser. The services, systems and appliances shown have not been tested and no guarantee as to their operability or efficiency can be given.

Plan produced using Planlup.

No statement in these details is to be relied upon as representation of fact, and purchasers should satisfy themselves by inspection or otherwise as to the accuracy of the statements contained within. These details do not constitute any part of any offer or contract. AP Morgan and their employees and agents do not have any warranty or representation whatsoever in respect of this property. These details and all statements herein are provided without any responsibility on the part of AP Morgan or the vendors. Equipment: AP Morgan has not tested the equipment or central heating system mentioned in these particulars and the purchasers are advised to satisfy themselves as to the working order and condition. Measurements: Great care is taken when measuring, but measurements should not be relied upon for ordering carpets, equipment, etc. The Laws of Copyright protect this material. AP Morgan is the Owner of the copyright. This property sheet forms part of our database and is protected by the database right and copyright laws. No unauthorised copying or distribution without permission.